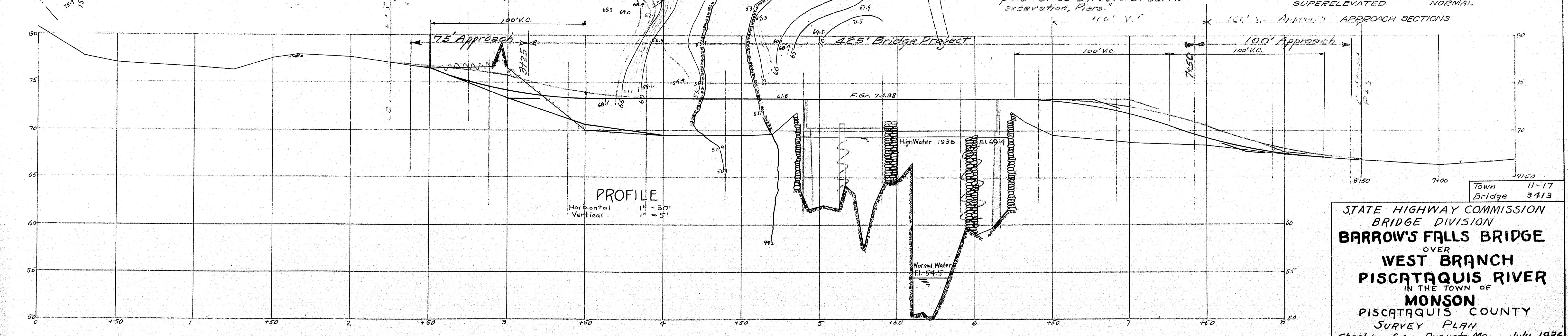
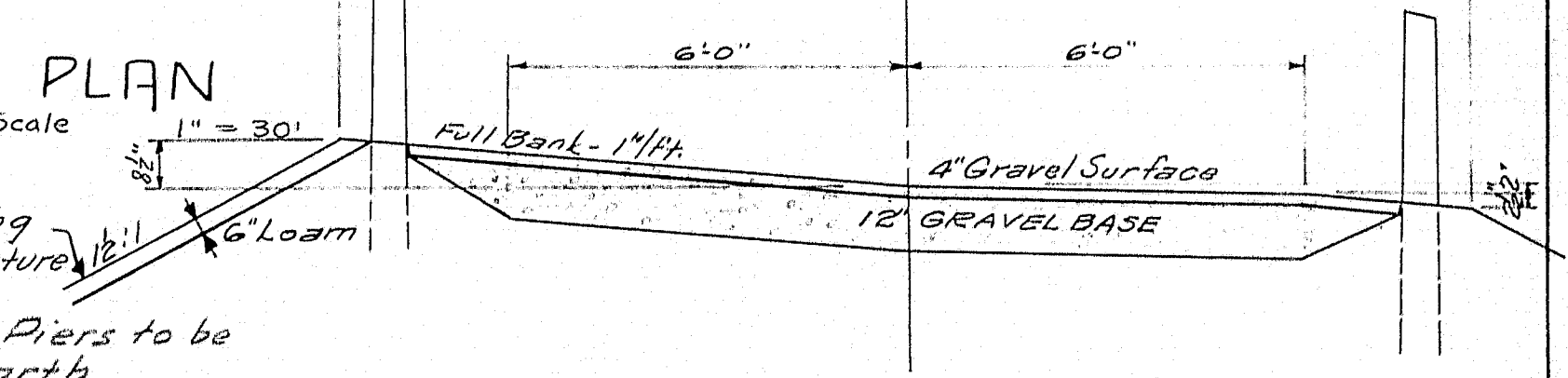
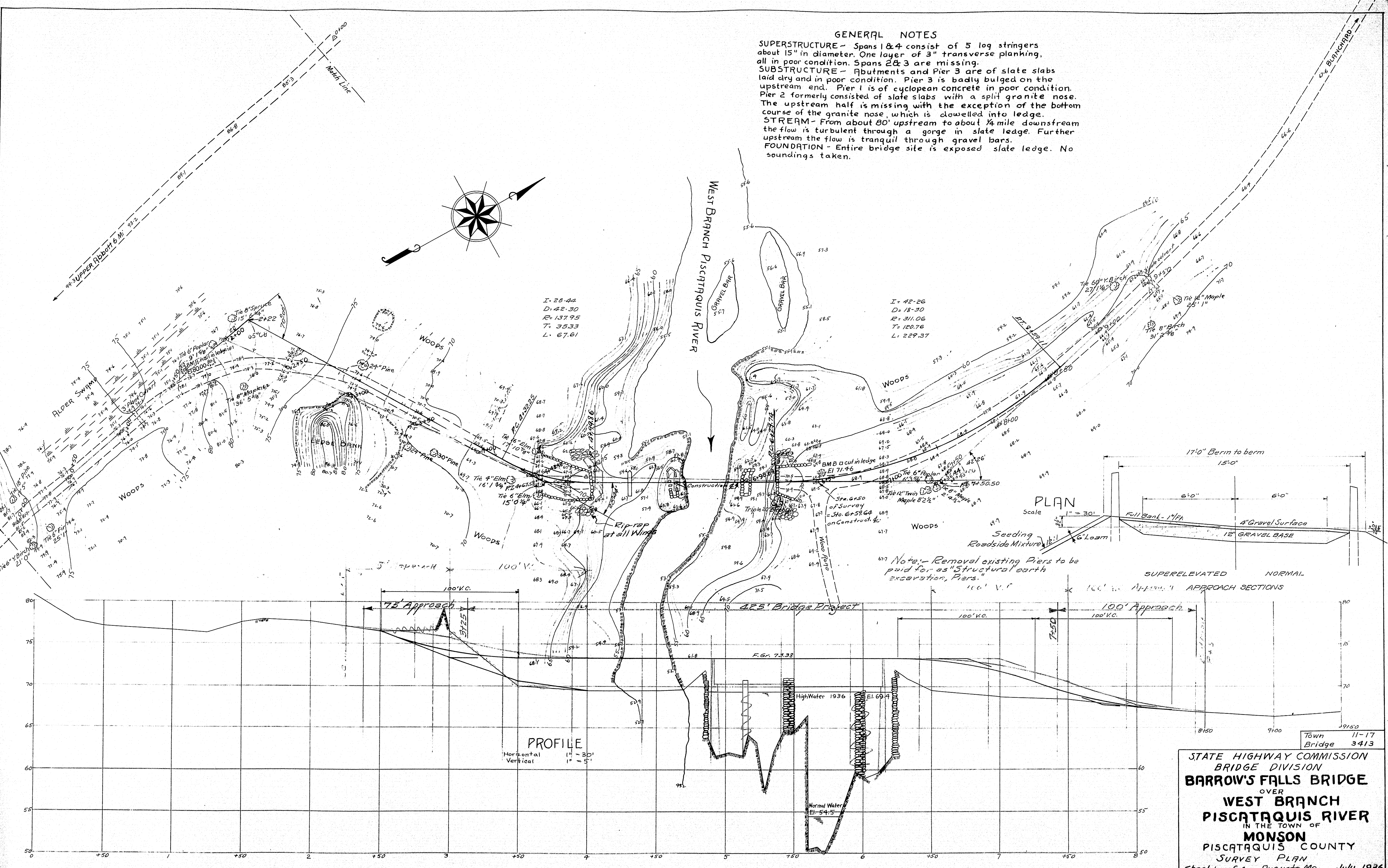
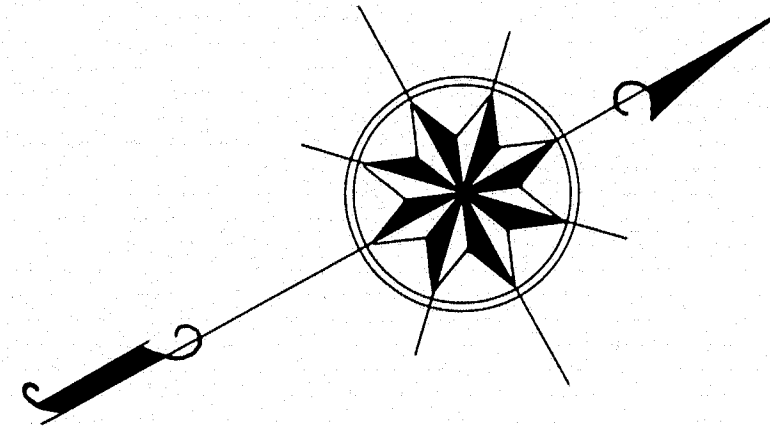
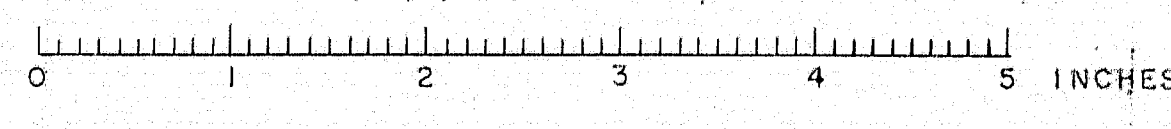
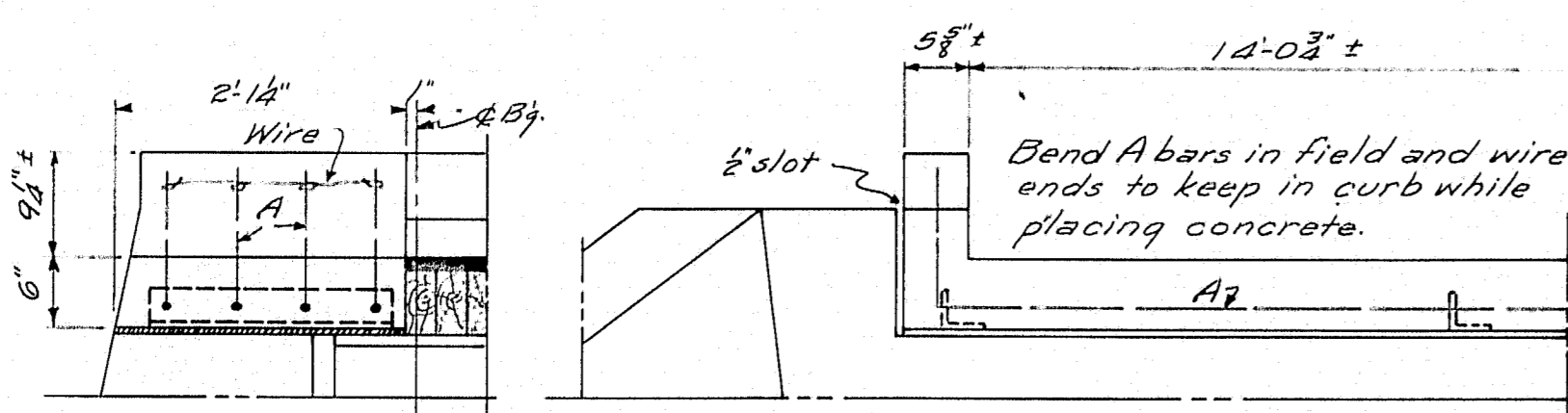
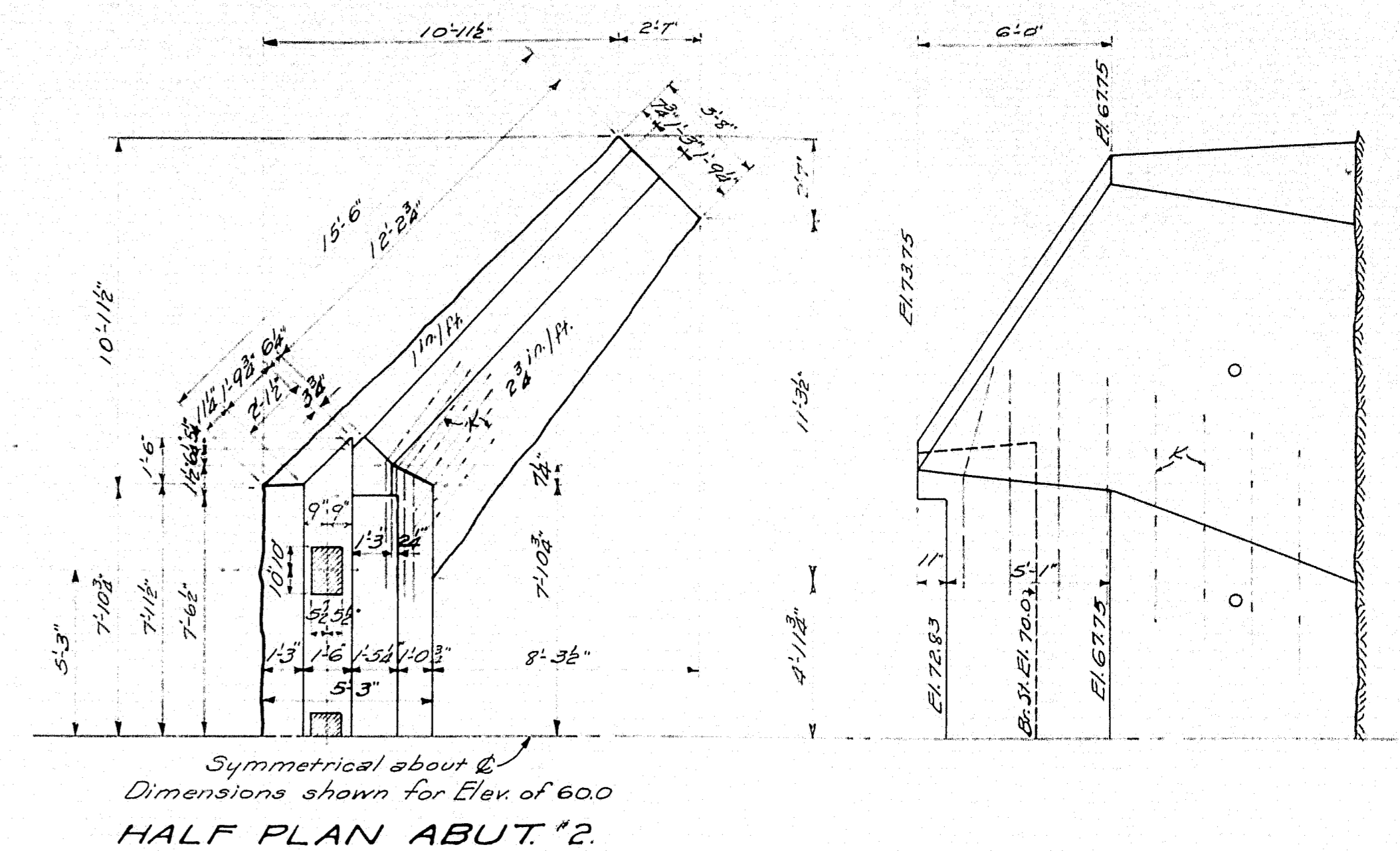
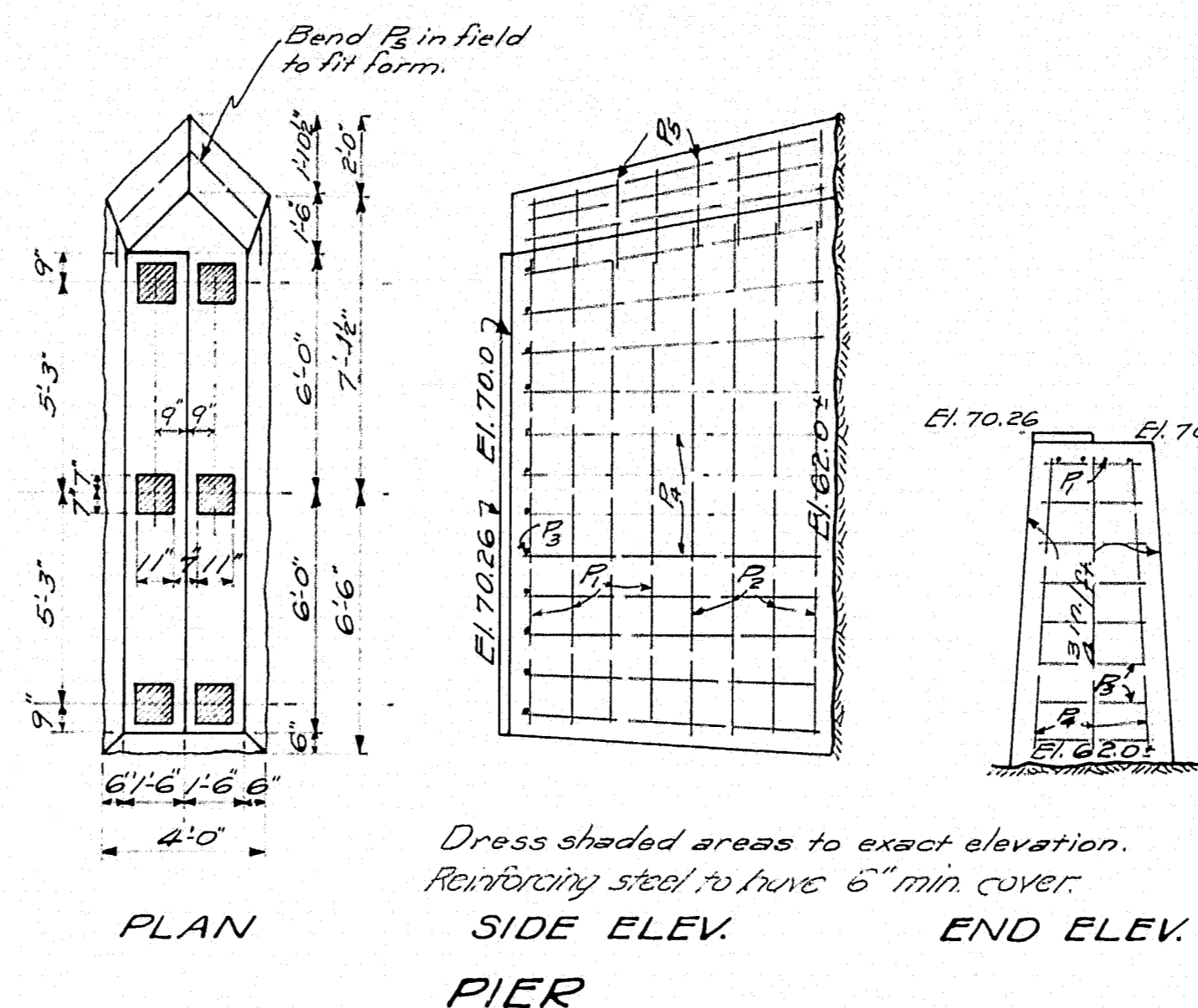


GENERAL NOTES
SUPERSTRUCTURE - Spans 1 & 4 consist of 5 log stringers about 15" in diameter. One layer of 3" transverse planing, all in poor condition. Spans 2 & 3 are missing.
SUBSTRUCTURE - Abutments and Pier 3 are of slate slabs laid dry and in poor condition. Pier 3 is badly bulged on the upstream end. Pier 1 is of cyclopean concrete in poor condition. Pier 2 formerly consisted of slate slabs with a split granite nose. The upstream half is missing with the exception of the bottom course of the granite nose, which is dowelled into ledge.
STREAM - From about 80' upstream to about 1/4 mile downstream the flow is turbulent through a gorge in slate ledge. Further upstream the flow is tranquil through gravel bars.
FOUNDATION - Entire bridge site is exposed slate ledge. No soundings taken.

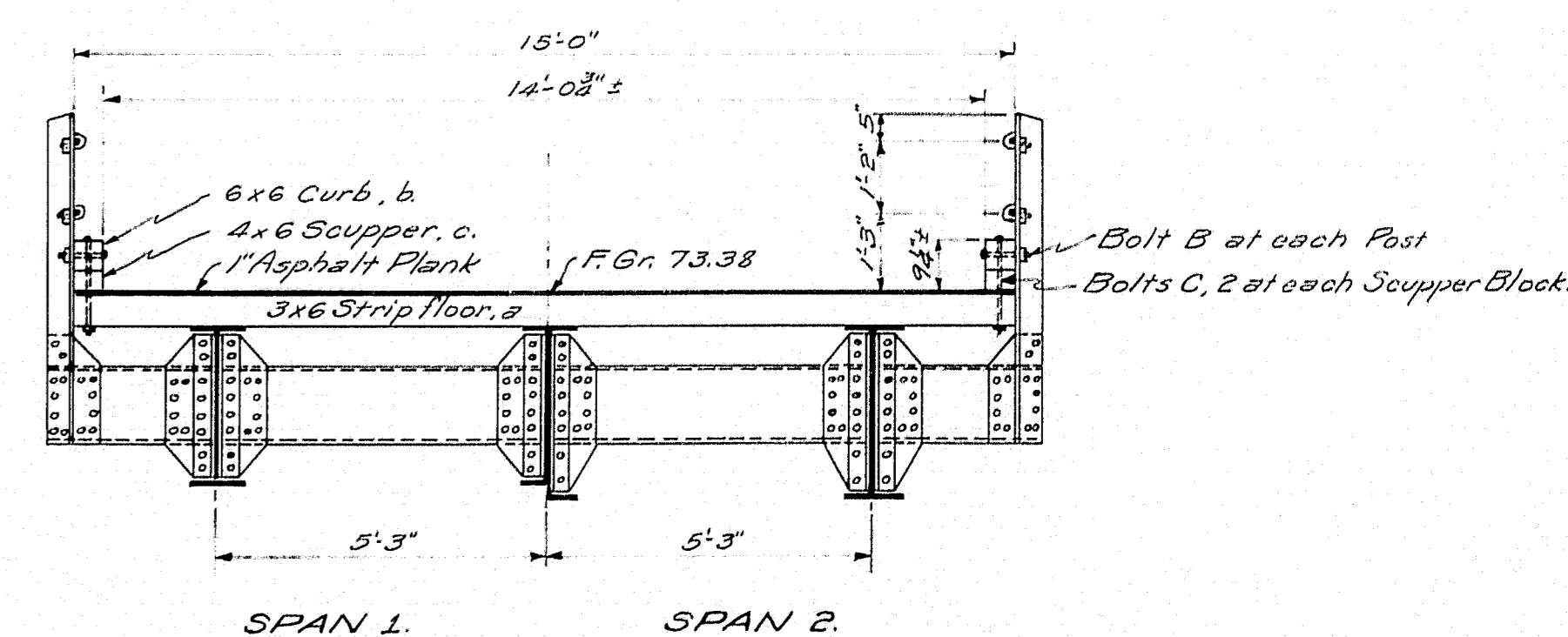


STATE HIGHWAY COMMISSION
 BRIDGE DIVISION
BARROW'S FALLS BRIDGE
 OVER
WEST BRANCH
PISCATAQUIS RIVER
 IN THE TOWN OF
MONSON
 PISCATAQUIS COUNTY
 SURVEY PLAN
 Sheet 1 of 2, Augusta Me July 1936

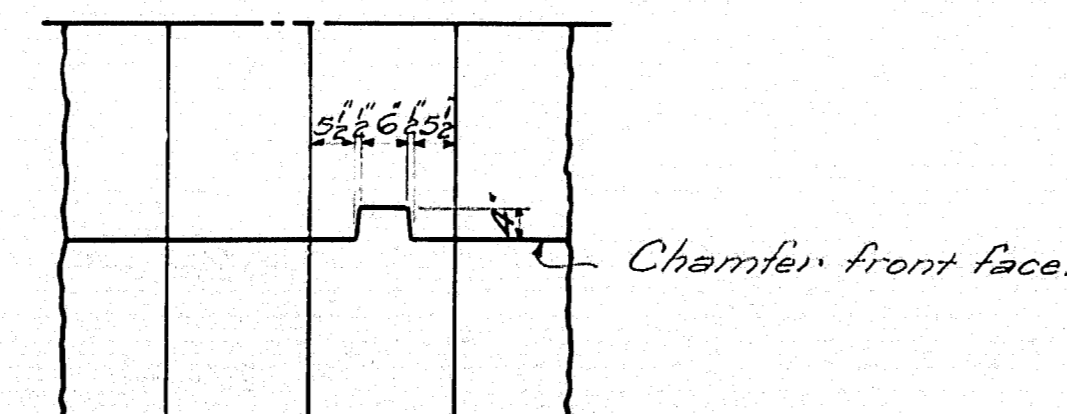




MATERIAL LIST.				
REINFORCING STEEL				
R	3'-0"	12 Req.	11'-9"	Pier., Sides & Top
R ₂	"	8 "	12'-9"	" Sides
R ₃	"	19 "	2'-0"	" Top & D.S. End.
R ₄	"	30 "	7'-6"	" Vertical
R ₅	"	8 "	7'-0"	" Nose
A	5'-0"	16 "	6'-6" Long.	Side over back wall.
K	3'-0"	32 "	8'-0"	Wings & Breast Wall.
TIMBER				
a	3 x 6	Drass A's	560 pcs	15'-0" Strip floor.
b	6 x 6	" "	243-4	12, 16, 18 & 20' Lengths - Curb.
c	4 x 6	" "	68'-0"	Cut 1'-0" Squepper Blocks.
1" Asphalt Plank 1825 sq. ft. — a, b, c Creosote treated (Pres- sures)				
BOLTS				
B, 34,	5/8" x 7"	Carriage Bolts, Hex. Nuts		
C, 1/30,	5/8" x 1-5"	"	"	with cast washer.
Steel erection bolts and rail hook bolts on Structural Steel Sheet.				



Cover the $\frac{1}{2}$ " slot between the superstructure and substructure on the back side with two layers of heavy roofing 10" wide. The area to be covered is to be recessed $\frac{1}{4}$ " by nailing thin strips to the forms before concrete is placed. Coat the surface of the concrete and the back side of each layer of roofing as applied with hot tar or asphalt.



ABUT. CONSTRUCTION JOINT KEY
Not at \pounds - Location and number to
be determined in field by Engineer.
Cover the back side as for $\frac{1}{2}$ " slot.

Note: - Wire cable over the bridge, between wood posts, to be paid for at $\frac{1}{3}$ the price of Wire cable guard rail.

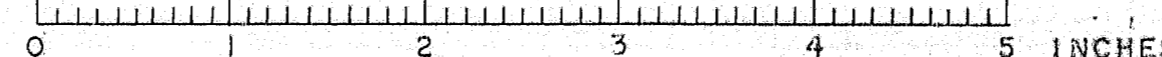
Strip floor to be fastened to stringers with Anchor Plates

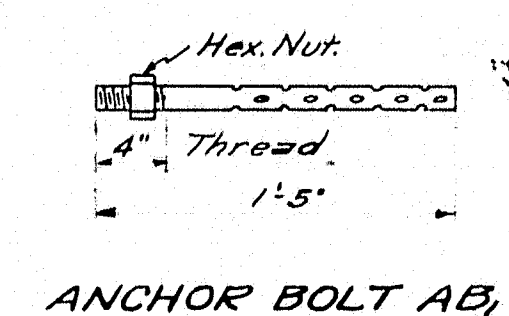
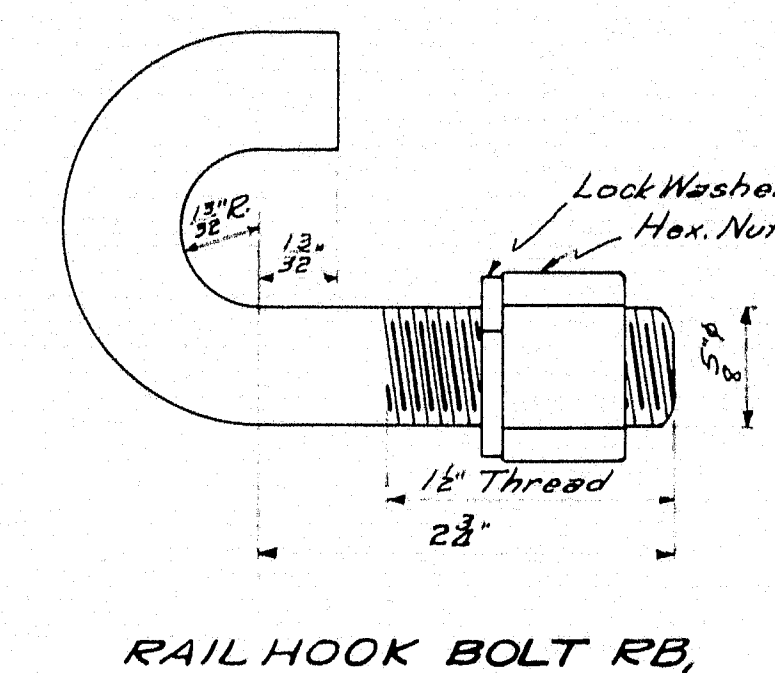
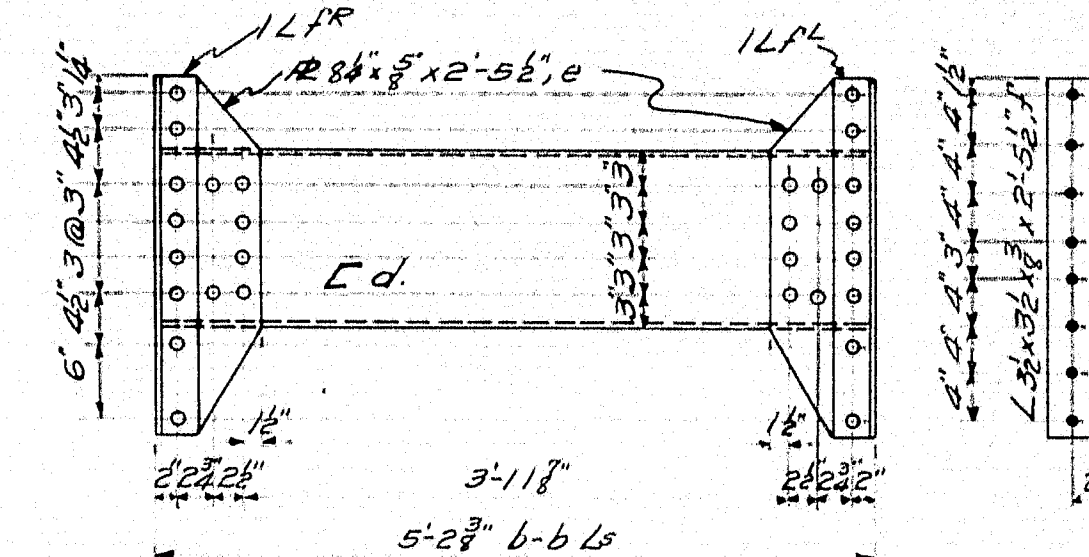
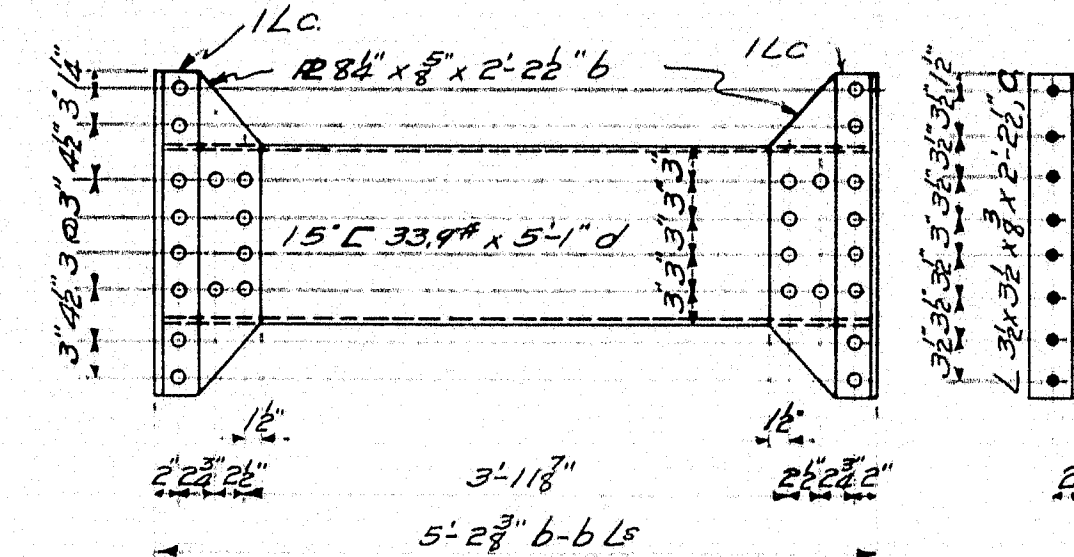
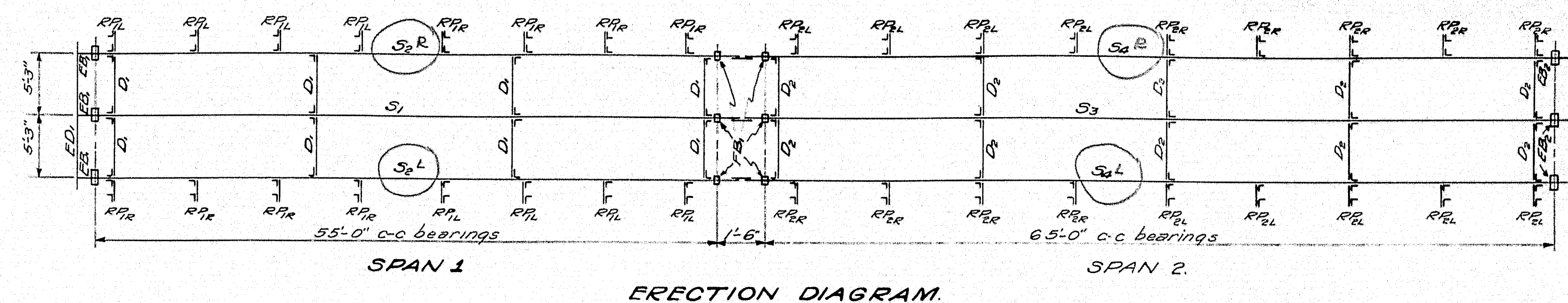
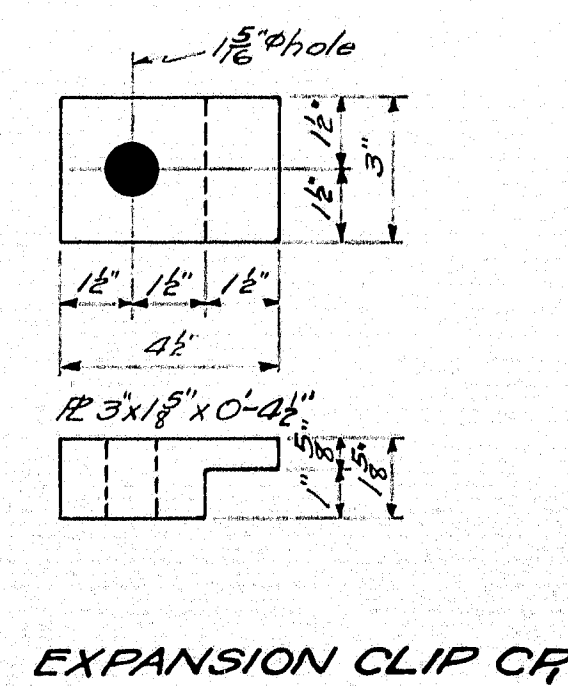
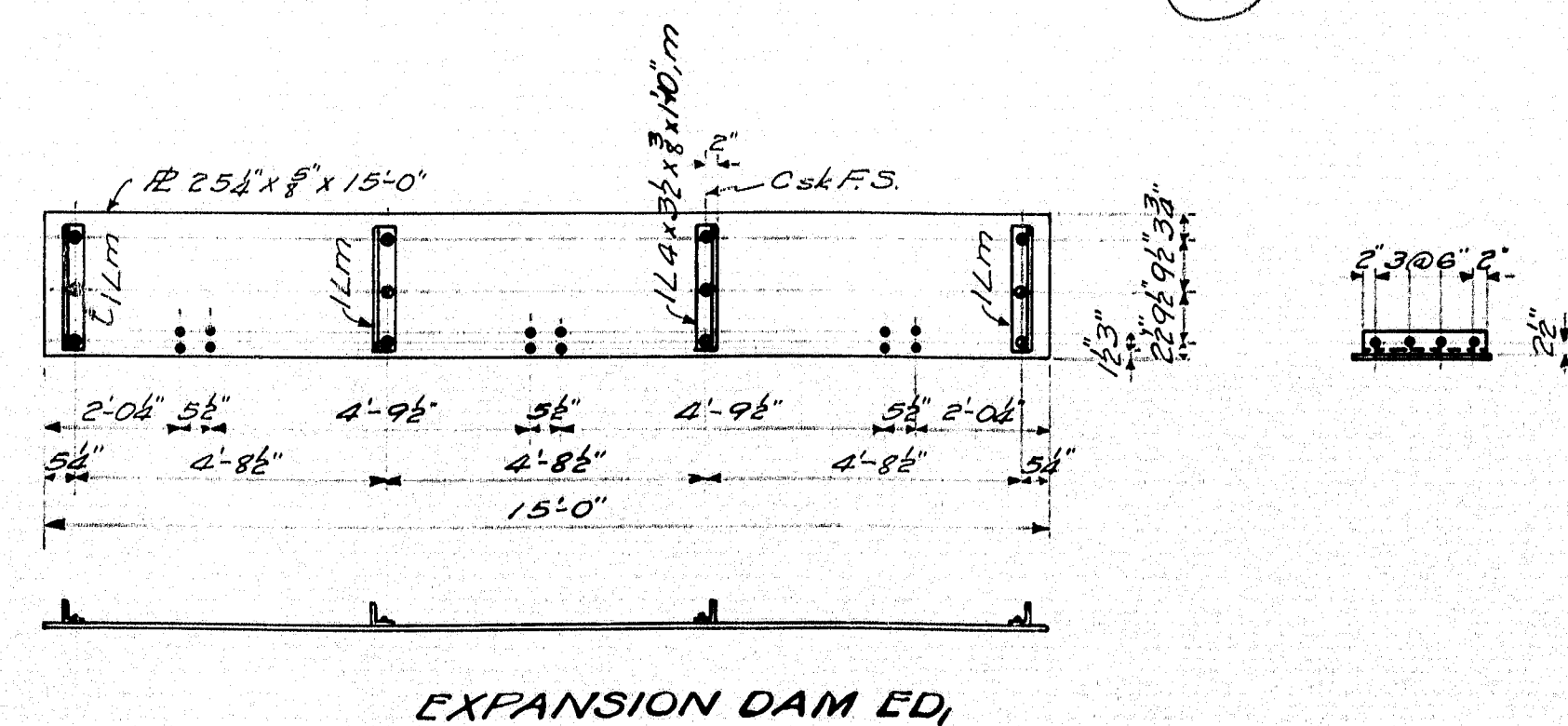
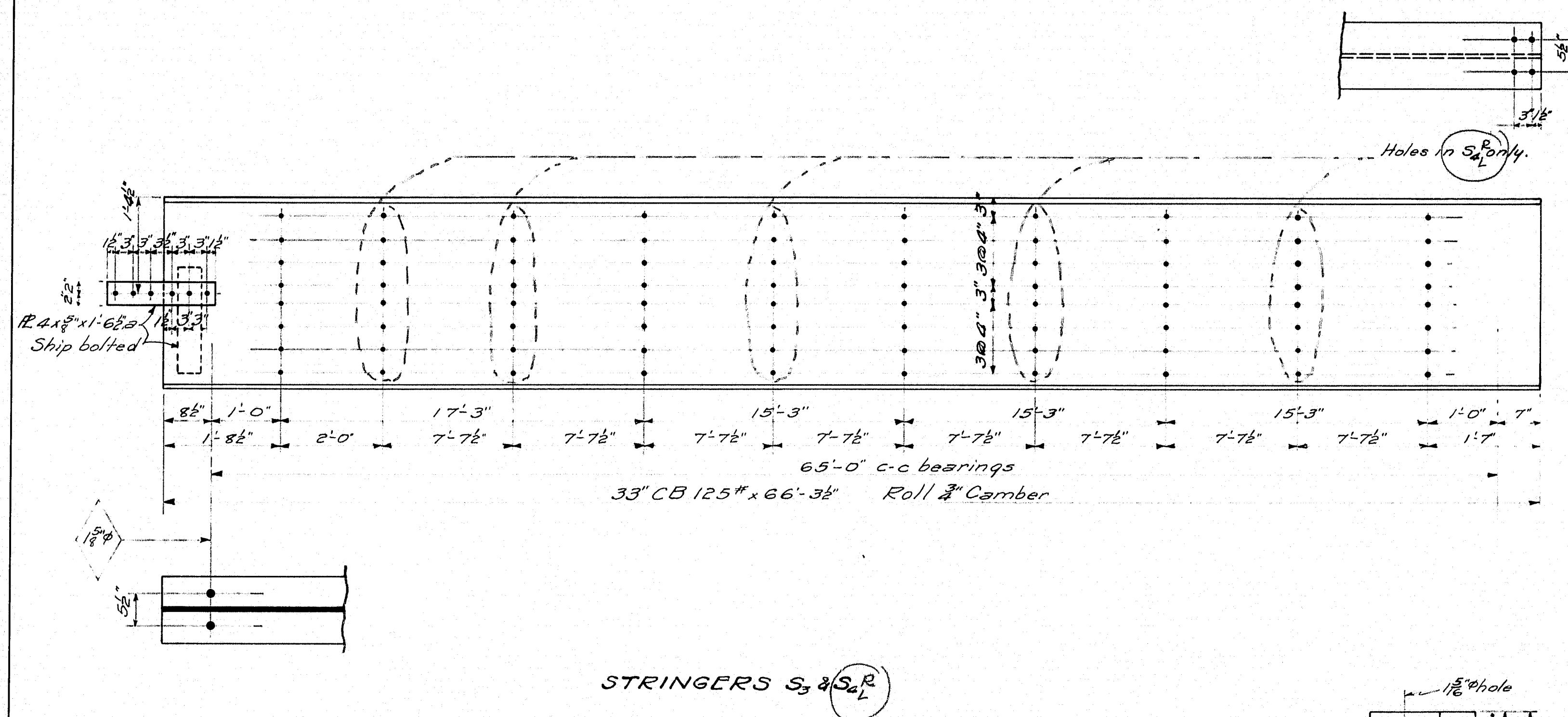
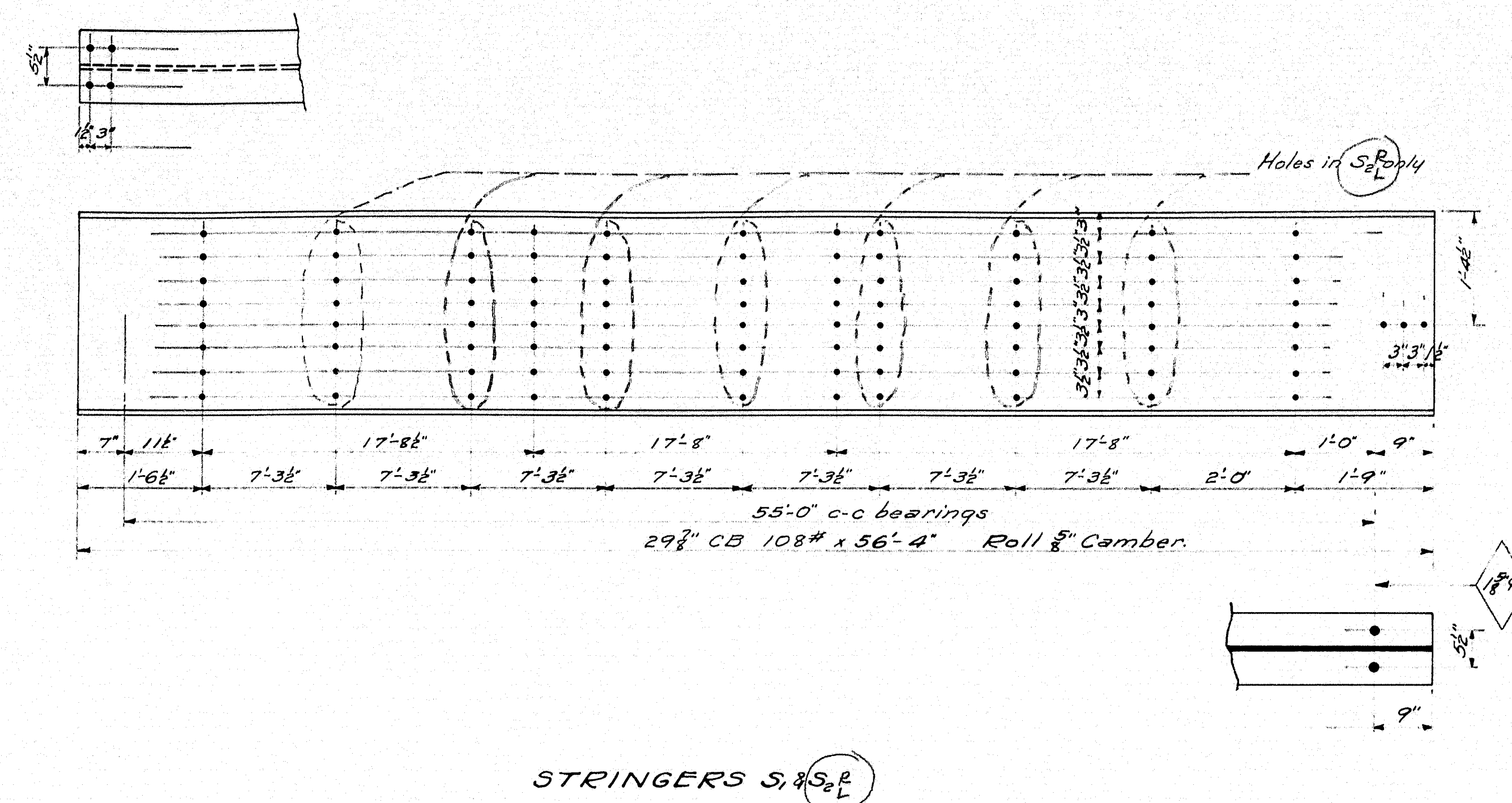
SPAN 1. SPAN 2.

HALF TRANSVERSE SECTIONS.

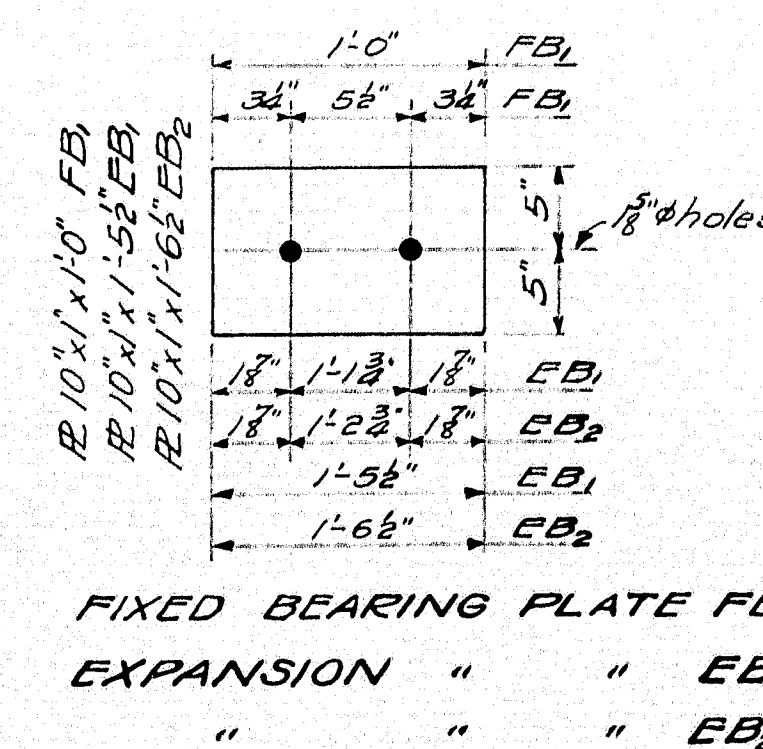
Design - C.A.B. TOWN 11-17
 Checked - R. Smith BRIDGE 3413

STATE HIGHWAY COMMISSION
BRIDGE DIVISION
BARROW'S FALLS BRIDGE
OVER
W. BRANCH PISCATAQUIS R.
IN THE TOWN OF
MONSON
PISCATAQUIS COUNTY.
BRIDGE DETAILS.
Sheet 2 of 4. Augusta, Me. Mar. 1939





RAIL POST RP_{1R} As shown
 RP_{1L} Opp. hand.
 RP_{2R} As detailed
 RP_{2L} Opp. hand.



MATERIAL REQUIRED		
MSK	NO.	DESCRIPTION
S ₁	1 (1/2")	Stringer
S ₂	1 (1/2")	"
S ₃	1 (1/2")	"
D ₁	8 (1")	Diaphragm
D ₂	10	"
ED ₁	2	Expansion Dam
EP _R	8	Rail Post
EP _L	8	"
EP _R	8	"
EP _L	9	"
CP ₁	12	Expansion Clip
FB ₁	6	Fixed Bearing
EB ₁	3	Expend. " "
EB _R	3	" " "
AB ₁	24	Anchor Bolts
EB ₁	68	Rail Hook Bolts
En Bolts	ETA	3 x 5/8" Std. Bolt, Hex. H.
	150	" "
	1	" "
	34	" "

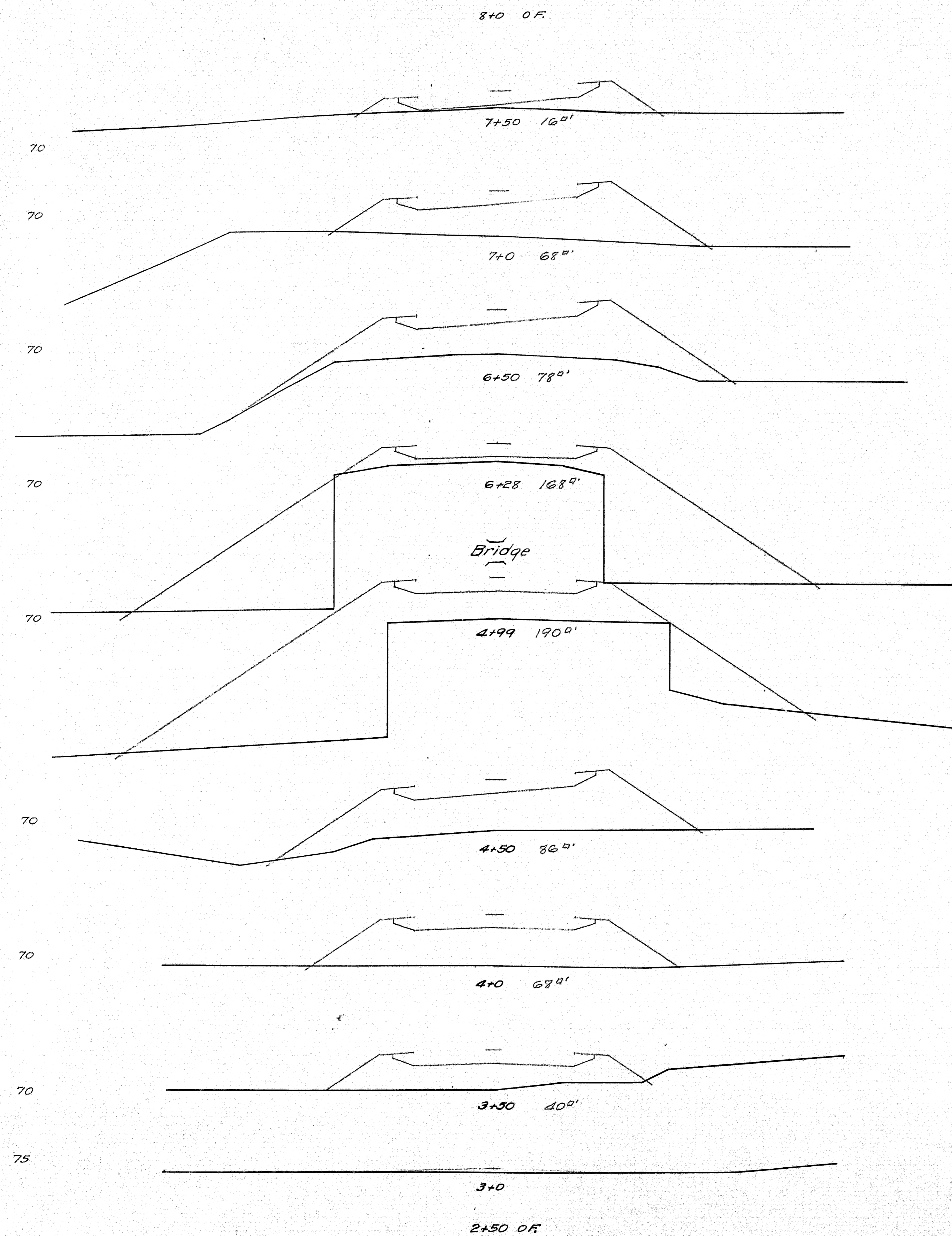
Rivets $\frac{3}{4}"$
Open holes $\frac{13}{16}"$ unless noted
Field connections $\frac{3}{4}"$ Bolts, Am. Br. or U.S. Std.
Paint 1 shop coat red lead and
oil, except contact surfaces
Maine State Highway Specifications
for Steel Bridges 1937.

Design - CAB
Checked - Hamilton

STATE HIGHWAY COMMISSION
BRIDGE DIVISION
BARROW'S FALLS BRIDGE
OVER
W. BRANCH PISCATAQUIS R.
IN THE TOWN OF
MONSON
PISCATAQUIS COUNTY.
STEEL DETAILS.

Sheet 3 of 4. Augusta, Me. Mar. 1939

36-85



BARROW'S FALLS BRIDGE
MONSON

Sheet 4 of 4.

36-86

0 1 2 3 4 5 INCHES